



## WELCOME TO WESLEY CHAPEL

We are open for Sunday Morning Worship, 10.30am, see p3 for details of our services.

The Nidd Valley Circuit presents a weekly service at 10.30am every Sunday. Please visit <https://www.facebook.com/NiddValley/>

Circuit Morning Prayer Live runs every morning Monday to Friday at 8am on Facebook. These are available for watching again after the live broadcast/ <https://www.facebook.com/NiddValley/>

All links (and much more) can be accessed via our website <https://www.wesleychapelharrogate.org.uk>

or if you need more information leave a message:  
<https://www.wesleychapelharrogate.org.uk/contact>

### Wesley Chapel Contacts

**Ministry Team:** Rev. Lesley Taylor, Rev. Trevor Dixon.

**Senior Steward:** Les Sudron

**Church Council Secretary:** Jenny Goodwin

**Safeguarding Officer:** Christine Sudron

**Weekly Pieces:** Les Sudron

**Focus Editor:** Judith Yeats e-mail [judithyeats0@gmail.com](mailto:judithyeats0@gmail.com)

**Website:** [www.wesleychapelharrogate.org.uk](http://www.wesleychapelharrogate.org.uk)

### Wesley Centre Contacts

**Wesley Centre Manager:** Philippa French (Pippa)  
[pfrench@wesleycentreharrogate.org.uk](mailto:pfrench@wesleycentreharrogate.org.uk)

**Premises Manager:** Julian Smith  
[office@wesleycentreharrogate.org.uk](mailto:office@wesleycentreharrogate.org.uk)

**Website:** [www.wesleycentreharrogate.org.uk](http://www.wesleycentreharrogate.org.uk)

### Address

Wesley Centre Harrogate, Oxford Street. Harrogate, HG1 1PP

***The deadline for 'Wesley Focus on June' is 23 May. Please send any notices, news, articles, photographs to Judith Yeats: 01423 506014, [judithyeats0@gmail.com](mailto:judithyeats0@gmail.com). Focus is also on the website. <https://www.wesleychapelharrogate.org.uk/our-focus>***

## WHAT'S ON AT WESLEY

**SUNDAY 1 May 10.30am.** Morning Worship with Holy Communion led by Rev. Trevor Dixon.

**SUNDAY 8 May 10.30am.** Morning Worship with Rev. Lesley Taylor.

**6pm.** Wesley Sunday Share via Zoom. *(Link will be sent out or contact Les or Judith).*

**MONDAY 9 MAY 1pm.** Lunchtime Recital. Fidelio Trio.

**TUESDAY 10 MAY 10am to 12 Noon.** Service and Coffee Morning.

**THURSDAY 12 MAY 2pm.** Wesley Fellowship. Robert (saxophone) and Judith (piano) entertain.

**SUNDAY 15 MAY 10.30am.** Morning Worship led by Rev. Trevor Dixon.

**SUNDAY 22 MAY**

**10.30am.** Morning Worship led by Rev. Ron Hicks.

**6pm.** Wesley Sunday Share via Zoom. *(Link will be sent out or contact Les or Judith).*

**SUNDAY 29 MAY 10.30am.** Morning Worship led by Rev. Anne Brown.

**EVERY TUESDAY (except 10 May) 10.30am Online Tuesday Coffee.** *(Link will be sent out, or contact Les or Judith).*

It is God who hold the nations in the hollow of his hand;  
It is God whose light is shining in the darkness of the land;  
It is God who builds his City on the Rock and not on sand:  
May the living God be praised!

*Fred Pratt Green StF 703, v1 (see also p25)*

## **Covid rules and regulations**

The current guidelines for Wesley congregation are that we encourage all those who come to the Sunday morning worship to continue to wear masks when moving around the church and singing. We will also continue to space out chairs to help with social distancing and encourage our preachers to keep services to the shorter duration that we have followed for so many months ie approx. 45 minutes.

We will keep everyone informed if there are any changes to these rules.

## **MINISTER'S MESSAGE**



Dear Friends

After three years, we were finally able to celebrate Easter in church. What a joy to be able to proclaim 'The Lord is risen' in our own church...and to hear once again how the disciples met the risen Jesus.

But, despite Covid and lockdowns...despite not being able to celebrate Easter in church since 2019...we've still been able to meet the risen Jesus and to see his work in our world and in our lives. The risen Jesus isn't confined to a building...he's out there in the world. In Luke 24: the women are greeted at the empty tomb by two angels who say to them: 'He is not here; he has risen.'

And the Gospels continue to describe meetings between the disciples and the risen Jesus in all kinds of places. The disciples find themselves meeting Jesus on the road to Emmaus. They find themselves in the presence of Jesus in a locked room in Jerusalem. Jesus comes to them during a meal, as he breaks bread with the disciples. Jesus meets the disciples as they return to fishing on the sea of Galilee.

*Continued over*

*Minister's Message continued*

Over the past two years, we've met the risen Jesus in church...on Zoom...by online worship...and on home worship sheets. I think that's taught us more about where Jesus is.

As we're now back in church, we mustn't forget that the risen Jesus is out in the world...and we can catch sight of him in many, many different places.

Every now and again, pause...and think. Where and when has Jesus touched your life? When has your heart been warmed? Perhaps, it was in something which made you smile...perhaps, in an unexpected act of kindness or in the glory and colour of Spring. Perhaps, you felt God's presence in your prayers or saw something new in a familiar passage of Scripture.

The Lord has risen. He is risen indeed, Alleluia!

With the risen Jesus, the world is a place of new possibility and opportunity. He's out there in the world...calling for us to join him..

The Lord is risen.

**Lesley Taylor**



*Spring pictures from Hever Castle by Ian*

## **WESLEY WEEK PIECES, TUESDAY COFFEE, SUNDAY SHARE**

As I begin to write this Wesley Week Pieces, I reflect that this edition represents two years of our weekly e-newsletter. When we introduced 'Pieces' we could not envisage that two years later we would still be sharing. We began in an effort to keep Wesley folk connected, informed, encouraged and a part of something special. The aim was to make us all feel valued and cared for and not alone, surrounded by the Love of God. The doors of Wesley Chapel are open again and although we need to stay wary and vigilant, we are slowly beginning to meet again. Having said that, some of our members are still restricted in what they feel able to do.

Looking forward, we propose to keep the Wesley 'Pieces' going, but feel it is the right time to reduce its publication to the 1st and 3rd Saturday of every month. Two editions every month will allow us to keep in-touch and keep sharing and many of the stories, will become part of our Wesley Focus that is posted to all those not on the internet.

We also hope to start, on the 2nd Tuesday each month, having one Tuesday coffee morning at Wesley Chapel, this taking the place of one of our Zoom gatherings. We feel it is right to have our doors open again, as when we do, people come in! We will continue to have our Zoom coffee gatherings on all the other Tuesdays.

Wesley Sunday Share will continue on the 2nd and 4th Sunday evenings in the month.

And of course, our beloved and so important Wesley Focus will continue monthly, under the careful stewardship of Judith. Please also remember that the website is always available if anyone needs to see what's going on. <https://www.wesleychapelharrogate.org.uk/>

Thank-you to you all for your support and care and concern for each other. We hope our plans for keeping connected feel okay to you, if you have any queries, suggestions or concerns please let one of the Wesley Chapel stewards know.

God bless.      **Les Sudron**

## **TUESDAY COFFEE**



The doors of Wesley will open on Tuesday 10 May 2022 for a coffee morning. The format is a little different from pre pandemic coffee mornings. We are introducing a short service and the Rev Trevor Dixon will be leading the first one. This will start at 10am. Those not wanting to come to the service will be able to join us at 10-30 for tea and coffee.

Barbara Lister will be playing the piano for half an hour from 10-30 to 11 o'clock.

We are praying that parents with young children or grandparents will bring young children to have a break from shopping and have a drink and a chat. It is important that plenty of congregation members are present to give a warm Wesley welcome . If you are unable to come please pray.

Following this event I would welcome comments so we can amend before the June coffee morning. The June coffee morning will be held on Tuesday 14 June 2022.

**Shelagh**

## **Dylan Thomas Quotes**

‘Do not go gentle into that good night but rage, rage against the  
dying of the light.’

‘He who seeks rest finds boredom. He who seeks work finds rest.’



## FAREWELL MOLLY

We said farewell to Molly on Sunday 3 April before she moved; to Wales to be nearer to her family. Jenny presented a card and gift on behalf of everyone at Wesley Chapel. We will miss you Molly but we will continue to send you 'Pieces' and hopefully you will still join us on our Zoom coffee morning gatherings. *See front cover for photo.*

*Molly did indeed join us on our coffee morning on 26 April and she looked very happy in her new surroundings. She had been on a lovely visit to Cirencester, only an hour and a half drive from her new home.*



### **From 'Under Milk Wood' by Dylan Thomas**

Every morning when I wake,  
Dear Lord, a little prayer I make,  
O please do keep Thy lovely eye  
On all poor creatures born to die

And every evening at sun-down  
I ask a blessing on the town,  
For whether we last the night or no  
I'm sure is always touch-and-go.

We are not wholly bad or good  
Who live our lives under Milk Wood,  
And Thou, I know, wilt be the first  
To see our best side, not our worst.

O let us see another day!  
Bless us all this night, I pray,  
And to the sun we all will bow  
And say, good-bye – but just for  
now!





## **IN MEMORY OF ROSEMARY AND MAVIS.**

We lost two of our dear friends since our last Focus. We remember them both with love.

Although Rosemary had moved to Stafford to be with family we were kept in regular touch, specially from

Lynne and Janet. Rosemary's funeral was streamed live on Friday 29 April at 2pm, so I hope that some of you were able to tune in and watch.

Rosemary's niece Cynthia and husband Vince wrote that Rosemary, who passed away on 9 April age 90, had been very active up to about a year ago and was still walking everywhere and was fiercely independent. Her mobility gradually got worse which was a source of great frustration for her. Rosemary had been such an integral part of our church and the circuit, the world doesn't seem quite the same without her.

Mavis was interested in everything we did at Wesley and we shall miss her encouragement and support, especially we accompanists. Mavis was always so appreciative of our music and never failed to thank us. During lockdown she asked Barbara to play some of her favourite pieces over the telephone. Such a lovely idea.

Mavis always wanted to help. She volunteered to help at Tuesday Coffee even when it was not physically possible. Not to be put off, she came along to talk to our visitors and make them feel welcome, and made a very good job of it too.

This is a message from Mavis's family.

'Cathie, Steve & Dominic would like to thank all the Wesley family for the immense love & affection shown to both mum & dad over their 13 very happy years at Wesley Chapel; they felt at home from day 1 & valued your friendship so much. May God bless you all xxx'

**Judith Yeats**

## **SELECTED NOTES FROM THE MINUTES WESLEY GENERAL CHURCH MEETING SUNDAY 24 APRIL 2022**

**Present:** Rev. Lesley Taylor (in the Chair), Rev. Trevor Dixon, Jenny Goodwin (Secretary) Maureen Greenberg (taking minutes) and 18 members.

### **Election of Stewards:**

Christine Bunting asked to step down as a steward – a card was available to sign showing our appreciation of her work – and Eileen Temple and Shelagh Outhwaite asked to step down as occasional stewards. The remaining stewards and occasional stewards were re-elected unanimously and from 1 May will be:

Les Sudron    Senior Steward

Mike Greenberg

Ulrike Hitchen

With occasional stewards: Christine Sudron, Jenny Goodwin, Philip Goodwin, Maureen Greenberg and Judith Yeats

### **Election Of Representatives to the Church Council:**

Lesley explained that because the membership is now below 50, it is no longer mandatory to have an Annual General Meeting and that everyone is entitled to attend Church Council. There must be 7 active members on the Church Council who are Trustees. Those nominated from this meeting are: 3 stewards – Les, Mike and Ulrike, together with Jenny Goodwin, Christine Sudron, Philip Goodwin, Janet Allen, Trevor Dixon

**Finance:** Mike reported that the deficit at August 2022 was likely to be £2000. There are enough reserves to pay this year's rent and circuit assessment but after August 2023 the reserves will have run out. Mike offered to personally underwrite the year to August 2023 but a long term solution was required. A Gift Day is appropriate for a mission project but not for day to day expenses. Mike was thanked for his work as Treasurer who led the meeting into ...

**General Conversation about the life of the church.** The meeting acknowledged that while finance, in particular reduced income from pre-COVID activities and reduced Sunday collections, was a symptom of the situation, the broader issue was our viability in terms of people to 'run' the church activities. We need to be realistic about the future – if indeed we have one.

*Continued*

Much as we all love the building, the real issue is people – not buildings or finance. Lesley explained the mechanics of closing a Church, given that we have already given our assets to the Circuit to be used by Wesley Centre

It was agreed to hold a Special General Meeting, **Sunday 3 July** after the morning service – Trevor offered to organize lunch.

The purpose of the meeting would be to honestly discuss and consider the options open to us:

- Is 20 people worshipping in a building this size viable, with responsibility for Sunday worship falling on a small number of people?
- Could the fellowship be maintained without meeting at Wesley?
- Should we join another Church?
- Could we invite other Church who are struggling to join/merge with us?
- Could we meet just once a month?
- How important is the presence of a Methodist Church in the town centre?
- If we really want to get more people here shouldn't we be looking at the outside of the building?
- to make it as welcoming as the welcome people experience when they get through the door?

Lesley asked for people to contact her with suggestions for discussion in advance of the meeting so that she could let everyone know. The options could be set out in Focus for us to consider before the meeting.

However, Les struck a more optimistic note. Whilst we have looked at numbers – people and money – we cannot put a value on the effect of our Sunday services on our lives and those of visitors. The contribution the worshipping community makes in supporting each other to go out into the world – our mission and evangelism – cannot easily be evaluated. Individual contacts at a morning service can make a huge difference to someone's life.

Lesley reminded us that we are in the season of Easter 'New Life' and that 'Prayer is the key'.

*Continued*

*Notes from Wesley General Church Meeting continued.*

**Safeguarding and Pastoral Care.** Christine Sudron thanked everyone for their help with Pastoral Care during the pandemic and for maintaining the fellowship by telephone, Zoom, Wesley Share and Weekly Pieces. All Pastoral Visitors must do a Safeguarding course and she has all the dates for the foundation and advanced courses.

DBS checks have run out for many and these will need to be renewed.

Christine was thanked for her work as Safeguarding Officer.

The meeting stood in remembrance of those who had died since the last annual meeting:

Sheila Callow

Elsie Dobinson

Margaret Fletcher

Barbara Flower

Rosemary Green ( who had moved to Stafford to be close to family)

Doug Hay

Roz McKenzie

David Megginson

Eileen Smith

Margaret Smith

Mavis Snowden

Geoff Webber

**Date of next meeting: to be decided at the Special meeting on 3 July.**

**Maureen Greenberg**

***Farewell by Anne Bronte***

*Farewell to thee! but not farewell  
To all my fondest thoughts of thee:  
Within my heart they still shall dwell;  
And they shall cheer and comfort me.*

## LOOKING BACK ON APRIL

### Mithras Trio

The concert on 4th April featured musicians called The Mithras Trio. Together with mum and Les I was enthralled by the music played by Ional Mancic on violin, Leo Popplewell on cello and Dominic Degaviao on the piano. Dominic shared that as a 12 year old while at Cheetams School of Music he had played at Wesley Chapel and he was delighted to be back. I love cello music and we sat on the front row almost in reach of the instrument. There was a large audience and everyone was very appreciative of music that included Piano trio, Op 150 by Amy Beach (1867 – 1944) a most remarkable lady. Also, Piano trio in B major, Op8 by Johannes Brahms (1833 – 1897)".

Thanks to Maureen for her wonderful brochure notes that I have used here! Every blessing. **Christine Sudron.**



*The Mithras Trio, and with Philip (page turner) and Andrew. (Photo by Ulrike)*

*'Life seems to go on without effort when I am filled with music.'*  
George Eliot

*'Music gives a soul to the universe, wings to the mind, flight to the imagination, and life to everything.'* – Plato

## Teddy Bears Picnic

We had a lovely morning. Lesley led the proceedings; we watched a video, sang Teddy Bear's Picnic, introduced our bears. Trevor's was the oldest bear, being the same age as Trevor; some were borrowed; some weren't really bears at all. We had a sociable morning with lots of fun and laughter. Barbara played (Teddy Bear's Picnic, of course!). Shelagh did a magnificent job of organising the event.



*There are more pictures of the event on our website  
<https://www.wesleychapelharrogate.org.uk/gallery>*



## WESLEY FELLOWSHIP



Although there was a reduced attendance at our Maundy Thursday meeting, I think it is safe to say that those present did, indeed, enjoy the fellowship. We commenced with Easter devotions and sang a couple of our favourite Easter hymns.

Our thought for the day was 'Life Before Harrogate' and it was interesting to note that none of the twelve members present were born in Harrogate. We were all 'off cumdens' as the Yorkshire folk would say.

Two very brave members kindly came forward and shared their journeys with us: Toni Malatesta from near to Naples in Italy and Frank Ellis from Huddersfield. We enjoyed hearing their stories, especially as neither of them had any notice that they would be the speakers of the day.

We intend to hold another such afternoon when hopefully more members can share their life stories with us.

Our next meeting will be on Thursday 12th May at 2.00 p.m. when Judith Yeats and her son, Robert Walwyn, will be entertaining us with a musical afternoon. Judith will play the piano and Robert will play a saxophone.

A warm welcome is extended to all members of Wesley. Do please come along for a pleasant afternoon of entertainment, fellowship, laughter, a cup of tea and a bun. What more can you ask for?

Best wishes to you all and hopefully see some of you on 12th May.

**Lynne Harvey.**



## DESERT ISLAND DISCS



This month Anna shares her desert island discs.

*'Bring me sunshine' by Arthur Kent & lyricist Sylvia Dee (sung by Morecambe & Wise).*

It's not a musical masterpiece, but this piece always gives me a warm nostalgic feeling and takes me right back to family evenings in front of the TV watching, in my opinion, the best comedy duo there ever was.

*Skylark by Hoagy Carmichael & Johnny Mercer (sung & arranged by Peter Skellern).*

Peter Skellern was played often in our house when I was growing up, initially on our record player at home – and then, recorded onto cassettes and played throughout family holidays in our VW camper van – I believe Peter Skellern is likened to marmite – but I've always loved his music and so now do my children.

*Ski Sunday soundtrack by Sam Fonteyn.*

I was lucky enough to enjoy a winter ski holiday every year with my family and watching Ski Sunday on a Sunday evening throughout the winter always got us in the mood, the music especially stirring up the excitement of whizzing down the snowy slopes of Austria.

*Tompkins Square Park by Mumford & Sons*

My favourite song by one of my favourite bands, this song is on the British Airways playlist. My husband, who used to fly back & forth to Houston for work, always said it reminded him of flying back to me after a tiring stint away from home.

*Continued*

### *Desert Island Discs continued*

#### *Festive Overture by Dmitri Shostakovich*

I first played this piece with County Band when I was 12 – I was third clarinet. I have also had the pleasure of seeing it performed live by The Liverpool Philharmonic Orchestra with my brother in the percussion section – in my opinion, one of the most exciting pieces of music ever written, and should always be listened to with the volume at max!

#### *O Magnum Mysterium by Morten Lauridsen*

There are SO MANY choral pieces I could have included, but I was lucky enough to sing this piece in Notre Dame Cathedral with Manchester Chorale when I was about 20. It's tricky to sing as there is no accompaniment, but really moving and quite ethereal, especially when sung in the perfect acoustic of a cathedral.

#### *Atlantic by Keane*

Keane is the band I have seen live most often and I will be going to see them again this Summer with my sister. During the release of this album, the singer, Tom Chaplin, was in the midst of a break down, which is revealed in the lyrics. The music, however, is written principally by Tim Rice-Oxley, the keyboardist, and are, in my opinion, some of the most beautiful chord sequences in modern day composition.

#### *Piano concert no. 21 by Mozart*

No matter how busy and hectic life is, listening to the second movement, the Andante, always takes me to a place of complete relaxation. It is simply a perfect piece of music composed by a Genius.

(Choosing between this and Rachmaninov's second piano concerto was near impossible)

*Thank you Anna for your wonderful selection. I am looking forward to listening to them.*

*Next month Andrew is going to share his desert island discs.*



## DAYS OUT WITH OUR CHURCH FAMILY

**Beamish Open Air Museum.** Mike and Maureen took Sarah, Thomas and Harry to Beamish Open Air Museum. It had been 40 years since their last visit when it poured and they have one photo from 1982 of Joanna standing in a field dripping wet and looking miserable, as only a drenched 4 year old 'I don't want to be here' can. Sarah visited it shortly after on a Guide camp and ....it poured. For the past 40 years whenever we've been caught in a downpour we all say, 'It's just like Beamish'. We can't say that any more because this week it was a glorious April day and we had a wonderful time.

The 1900s town shops were fascinating, and scared me at how many of the items I could remember. I had to explain to Thomas and Harry how a mangle was used, what Spangles tasted like and that a price tag of 1/11 meant one shilling and 11 pennies. They looked at me with disbelief when I was explaining pounds, shillings and pence and the calculations we had to do – all without a calculator.

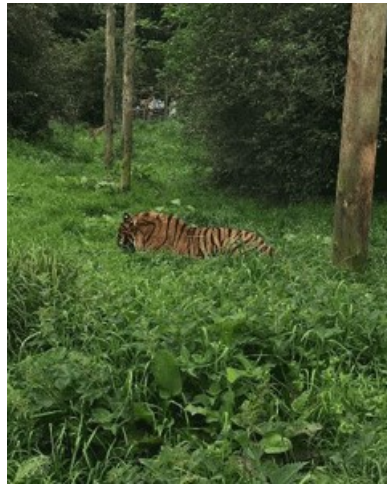
The boys loved the rides. I thought one tram ride was enough but no ... Harry had to travel on every tram, even if they weren't going in the direction we were heading – and it was good to have a sit down.



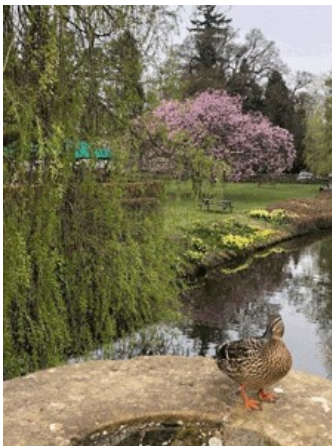
And then there was the tiny, tiny steam train that shunted backwards and forwards. What is it about steam trains that so captivates little (and big) boys? **Maureen**

*Days out with our church family continued*

**Lake District Safari Zoo.** Juliana writes ‘....We went to the Lake District Safari Zoo near Ulverston to fulfil my youngest daughter’s dream to get as close to a tiger as she can. It is a 50 acre predominantly open park that focuses on helping children understand about the importance, needs and challenges that the world’s animals face in our modern times. We both got a chance to feed young Kumba and he roared a couple of times and I am so glad I was on the other side of that cage! *(below left)*. *(Below right)* We think it was one of Kumba’s family out for a walk’.



**Hever Castle.** Ian sent some pictures from one of their visits to Hever Castle.





## International Festival Fire and Light Experience

Maureen writes about the family visit to the Fire and Light Experience in the Valley Gardens.

We arrived at dusk to see the Gardens transformed into a magical scene of fire and light.'

Along the paths were many different art installations that enhanced the beauty of the setting. This one (below right) one celebrated all that is Harrogate.

And as it got darker ...and a little bit scarier...there were dragons breathing fire. And spectacular fire performers who took our breath away.



It was a stunning evening of family entertainment. A very special event on a lovely spring evening.

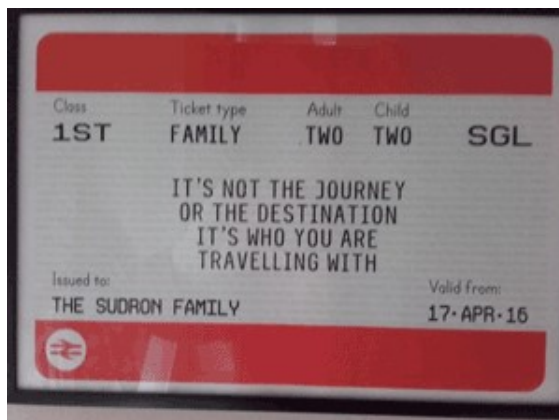


## FOCUS ON FAMILY

Happy birthday to Benjamin, one of Margaret's great-grandsons who brought his mum Emma, to the Sudron's house to receive some birthday gifts. After the celebrations Ben asked his great-grandma to read his book to him and the picture shows they all enjoyed it!



It was Rowan's 6th birthday in April and when he was born his parents had this lovely 'rail ticket' made:



The Sudron family celebrated Daniel's 40th birthday near Kirkby Lonsdale and the four generations had a lovely time.

The children had painted the roll of paper back at home and then helped Christine stick on lots of pictures of Daniel over the years.

Christine baked the birthday cake and the children presented it and helped to eat it!



During the family holiday to celebrate Daniel's special birthday, he did the Yorkshire Three Peaks walk (a challenge of 24 miles in under 12 hours). It was very misty, but here is a photograph of Ribblesdale viaduct on a different day when the clouds had lifted.





## Birthday Celebrations at Kirkby Lonsdale

Four generations of the Sudron family celebrated Daniel's birthday at Kirkby Lonsdale. I think we can safely say they had fun.



*On the farm with Shetland ponies and carrots!*

*Margaret/Great-grandma sharing her first marshmallow toasted on an open fire!*

*Fish and chips on the front at Morecambe*

*Great-grandma gave Rowan an early birthday present!*

*Notice at Devil's Bridge...not sure what 'a reasonable excuse' would be.*



*As part of its Great 50 Days District Initiative, the District is offering a Kindness Course.*

Extravagant Generosity and Unexpected Acts of Kindness – walking God’s stepping stones of love A six-week bible study on the theme of generosity and kindness, which helps us explore and practice generosity and kindness as disciples of Jesus.

The course is written by the Revd Dr David Perry, District Mission Consultant, as it is a great opportunity to explore how we can be responding to the gospel by living kind, generous, open-hearted lives, that are in themselves evangelistic, because we’re reaching out in kind and generous ways.

‘Each of us has our own story to tell of how Covid-19 has impacted our lives and those of our families and friends and of the personal struggles that have ensued. It is also true that many of us have the sense that the church will never be the same again. We are undoubtedly living through a time of accelerated transformation; of profound challenges to what was and of great opportunities for that which is yet to be. The image of stepping stones provides a helpful analogy for what lies ahead. As we pray, study and reflect together, this course of shared bible study encourages us to look at generosity and kindness as being two crucial and timely stepping stones that God is offering to the church as collectively we begin to consider what our next steps are to be. The course encourages us to share our own experiences of generosity and kindness and to consider how by being kind and generous we can reach out to our communities in new ways in this time of great need.’

*Visit <https://www.yorkshirenemethodist.org/> and search for the link to 50 Great Days*

## **FRED PRATT GREEN 1903-2000: A potted history**

*When our confidence is shaken, in beliefs we thought secure;  
When the spirit in its sickness seeks but cannot find a cure:  
God is active in the tensions of a faith not yet mature. StF 644 v1*



Most of us are familiar with the hymns of Fred Pratt Green. His words are so relevant and there are no fewer than 23 of his hymns in *Singing the Faith*. However his output was much more prolific and as well as hymns he wrote poetry and plays.

Pratt Green had a Methodist upbringing and attended a Methodist boarding school at Colwyn Bay. After hearing a sermon by Rev. William Rushby on John Masefield's *The Everlasting Mercy* he candidate for the Methodist ministry.

The key to his eventual choice of Methodism was its open welcome to Holy Communion. By the time he had graduated from theological college he was convinced that fundamentalism is a grave misinterpretation of the Bible, that Christian unity, though seemingly unattainable, is an important goal, and that the Church must involve itself in social concerns.

Throughout his ministry Pratt Green served in various circuits in Yorkshire, Brighton and the London area. Of interest to us, he was appointed to the Otley Circuit, living at Pool-in-Wharfedale, from 1931 to 1934, and then to Bradford (Manningham) Circuit based at Gillingham where he began writing plays. In 1957 he was appointed as Chairman of the York and Hull Methodist District. He was part of the working party that planned *Hymns and Songs*, a supplement to 1934 *The Methodist Hymn Book*. He retired to Norwich and thus began his hymn-writing career.

During the next 20 years he produced some 300 hymns and Christian songs, one of which was included in the official order of service for the nationwide celebrations of the Silver Jubilee of Queen Elizabeth II. (StF705). In 1995, Frederick Pratt Green was awarded an MBE for services to hymn writing. He died on 22 October 2000.

<https://www.poolinwharfedalehistory.co.uk/11-churches-chapel-of-ease-for-pool/>

<https://stainer.co.uk/composer/fred-pratt-green/>

<https://archiveshub.jisc.ac.uk/>

## Pets Corner

A contribution from Benji, who sometimes looks after Ian and Eileen when they are down south.

'This area of heath and forest is very close to where we are at the moment in Lingfield. Fresh air and plenty of hills to test your legs. Although I am only 17 months old, I can run faster and further than Ian and Eileen. Georgia however, is quite young too and like me can run faster and further than her grandparents! And here is me, helping Eileen with the Times 2 Cryptic Crossword.'



Christine Bunting writes about daughter Rachel's little cat which she adopted from a rescue centre about three months ago. 'She is jet-black all over with no trace of white. She is extremely timid, no doubt because of past experiences, and for the first few weeks she hid on a high shelf and only came out at night to feed when the flat was quiet.'

*Continued*

She has gradually become braver and now likes to watch the birds from the window-sill and play with her toys. She lets Rachel stroke her a little and has started to purr quietly and miaow. She still hides when anyone goes to visit and doesn't come out until they have left, but when Graham and I went to visit Rachel, she peeped out from her hiding place and started to play with her favourite ball. We were highly honoured! The hope is that, in time, she will be good company for Rachel. She is certainly keeping Rachel busy researching how to help timid cats! Rachel is keeping quite well and was pleased to see us when we visited about two weeks ago. We are planning another visit in May'.

---

### **LEISURE by William Henry Davies**

What is this life if, full of care,  
We have no time to stand and stare.

No time to stand beneath the boughs  
And stare as long as sheep or cows.

No time to see, when woods we pass,  
Where squirrels hide their nuts in grass.

No time to see, in broad daylight,  
Streams full of stars, like skies at night.

No time to turn at Beauty's glance,  
And watch her feet, how they can dance.

No time to wait till her mouth can  
Enrich that smile her eyes began.

A poor life this is if, full of care,  
We have no time to stand and stare.



*Wesley Centre Leadership Team has produced guidelines for all users for access to Wesley Centre. I hope this will be helpful.*

## **Guidelines for All Users for Access to Wesley Centre**

Harrogate Homeless Project (HHP) has exclusive use of the Lower Hall. HHP deals with vulnerable service users and for safeguarding purposes it is a requirement that we respect the following guidelines.

### **All Users.**

Entry into the building is via the rear door in the car park. Please note there is no access through the side door off Cheltenham Crescent. There is a keypad at the bottom of the rear stairs to access the Upper Hall.

The lift is now locked and use is restricted.

If you encounter any problems whilst you are using the premises please contact Julian Smith, Premises Manager, 07770 075156 or Pippa French, Manager, 07957 738238

### **Wesley Chapel Users.**

If you have any reason to enter the Lower Hall please request prior permission from HHP staff, either by phone or e-mail. The only access in the Lower Hall available without HHP prior permission is the Plant/Boiler Room.

Details: Giuliano Achilli, 07501 919690 [giuliano@hhphostel.org](mailto:giuliano@hhphostel.org)

If you are opening for others, access to the building is via the rear door, by the car park (not the side door off Cheltenham Crescent). Users must then use the keypad door at the bottom of the rear stairs.

For the safety of our staff please clear with them if you need to come into the building for whatever reason. They should be your first contact if we wish to check if a specific date is free.

[admin@wesleycentreharrogate.org.uk](mailto:admin@wesleycentreharrogate.org.uk)  
[pfrench@wesleycentreharrogate.org.uk](mailto:pfrench@wesleycentreharrogate.org.uk)

*Continued*



*Guidelines for All Users for Access to Wesley Centre continued.*

The stewards also have access to the Wesley Centre diary. If you wish to check when the Upper Hall is free before booking, please ask one of the stewards to check for you.

Access to the Centre can no longer be on a 'just pop in' basis.

Mencap and other users supporting vulnerable people, have exclusive use of the Upper Hall for the duration of their booking and no one else must be on the premises at the time of their sessions without prior permission.

Thank you for your understanding and support in adhering to our guidelines and enjoy our lovely building.

**Wesley Centre Leadership Team. February 2022.**

## **WELCOME TO JULIAN**



We are pleased to welcome Julian Smith, our new Wesley Centre Premises Manager. Some of us have already introduced ourselves to him and I'm sure he will get to meet you all in time.

**Pippa** sent us this story and picture. 'Here is a photo of me and Julian cracking on with garden/garage clearance last week with Julian probably wondering if this was in his job description! It was certainly a blessing to have the sun as it would have been awful doing it in the rain. My Marcus did the running up and

down with buckets of rubble (rewarded with a Greggs roll afterwards - generous, aren't I?!) Another skip was filled and we have a much tidier looking outdoor area. We also managed to make more space in our small storeroom and a lot of HHP's debris in Wesley House has gone too. The Lower Hall kitchen storeroom is also clear which will make it easier for HHP to restart their meals. They have some of our cutlery and pots and pans on loan, for which they are very grateful'.



*Wesley Centre continued.*

**Mike writes** 'I had a lovely evening one Thursday listening to the Harrogate Theatre Choir at Wesley. It wasn't a 'proper', formal concert, more a sort of dress rehearsal, in which the audience took part! It was a joyous occasion and I love the thought that they are using our premises to rehearse every week, contributing to our rich musical tradition. I really would recommend looking out for any of their future concerts and attending if at all possible'

## **LUNCHTIME RECITAL**

**Monday 9 May 1pm. Fidelio Trio** will be making its third appearance at Wesley Centre and will be performing:

Antonin Dvorak Piano Trio no. 4 in E minor, op 90 ('Dumky').  
Charles-Camille Saint-Saens Piano Trio No. 2 in E minor op.92.

Entry £10 on the door.

## **HARROGATE CHORAL SOCIETY**

Next Event. Voices Organ and Brass in St. Wilfrid's Church,  
Harrogate, 25 June

MacMillan – Ecce Sacerdos Magnus

Gregson – Make A Joyful Noise

Brown – Seascape

Parry – I Was Glad

Rutter – Gloria

Plus other organ and brass pieces with Cobalt Brass

Northern Percussion Ensemble

Thomas Moore – Organ

Aoifi O'Connell - Soprano

Andrew Mayor – Bass/Baritone

Conducted by David Lawrence.

Tickets available soon. Ask Jenny or Philip or Judith for more details.



## *Prayer Corner*

### **God of every moment**

God of this moment,

We pray for people meeting to worship you today, especially those who have to do so in secret and in fear.

God of this day,

We pray for all who will find this day difficult, particularly those living in the countries and communities where All We Can is working – in places where there has been a recent disaster, or the long-term effects of poverty are impacting the local community.

God of this week,

We pray for political and societal leaders around the world, in the face of difficult decisions this week, and with the responsibility to do all that they can to bring about a better, fairer, more just world, we pray for wisdom and grace for each and every one of them.

God of this year,

We pray for all who are working to seek a better world – from the staff teams of relief agencies working in refugee camps in Cox's Bazar and Za'atari, through to those who volunteer for and donate to charities who are committed to seeking justice and human dignity. Give each of us the courage to play our part in that work today, O Lord.

God of every moment,

Help me to be an answer to prayer for somebody else this day.  
Amen.

<https://www.allwecan.org.uk/>

Wesley  
CHAPEL  
H A R R O G A T E



*2nd Tuesday of the month*  
**Commencing 10th May 2022**

*Shoppers Service 10:00-10:30*  
**Coffee & Teas served 10:30-12:00**

*Everyone welcome including children in pushchairs*